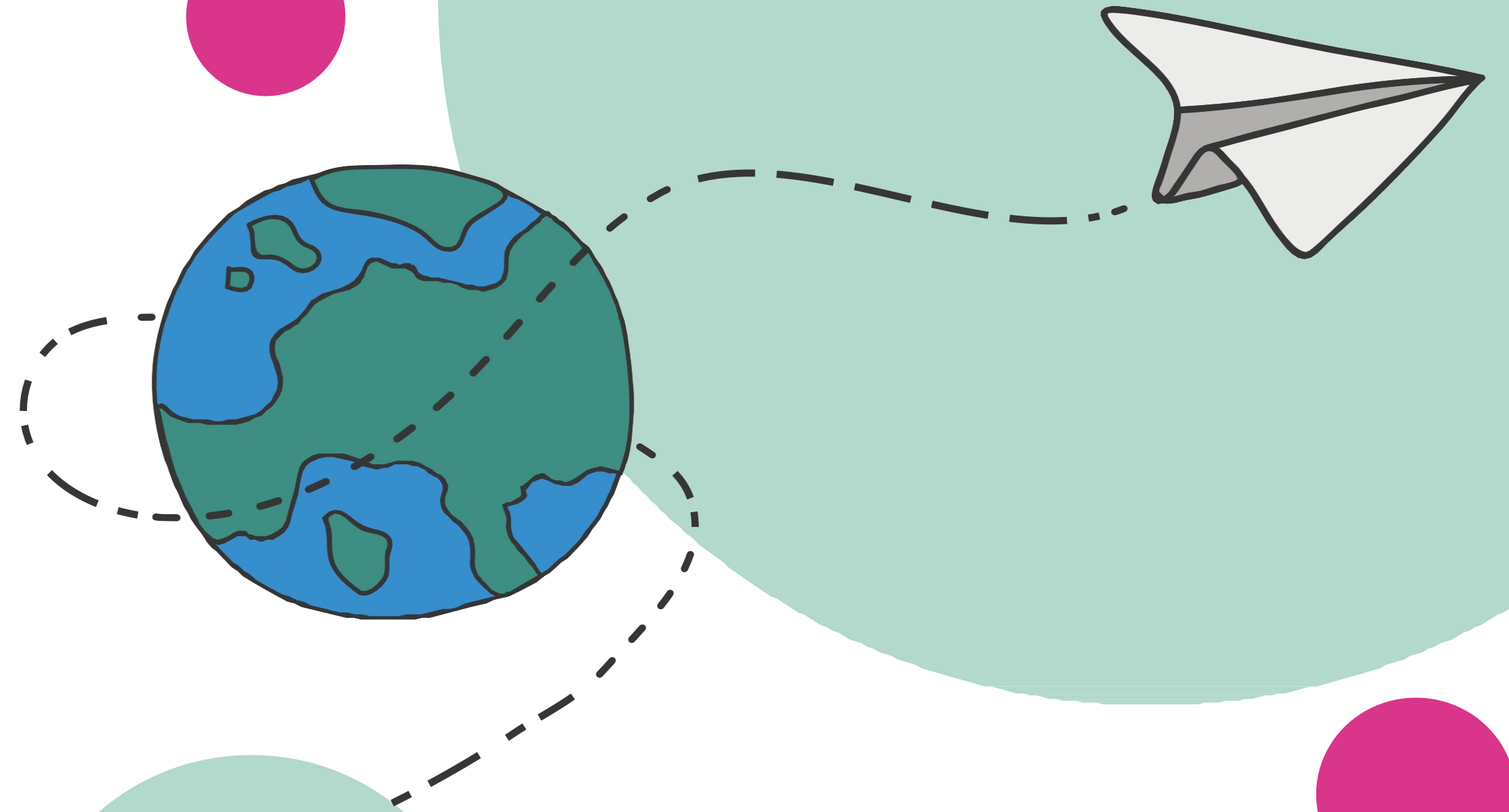


INTERNATIONAL



MOBILITY



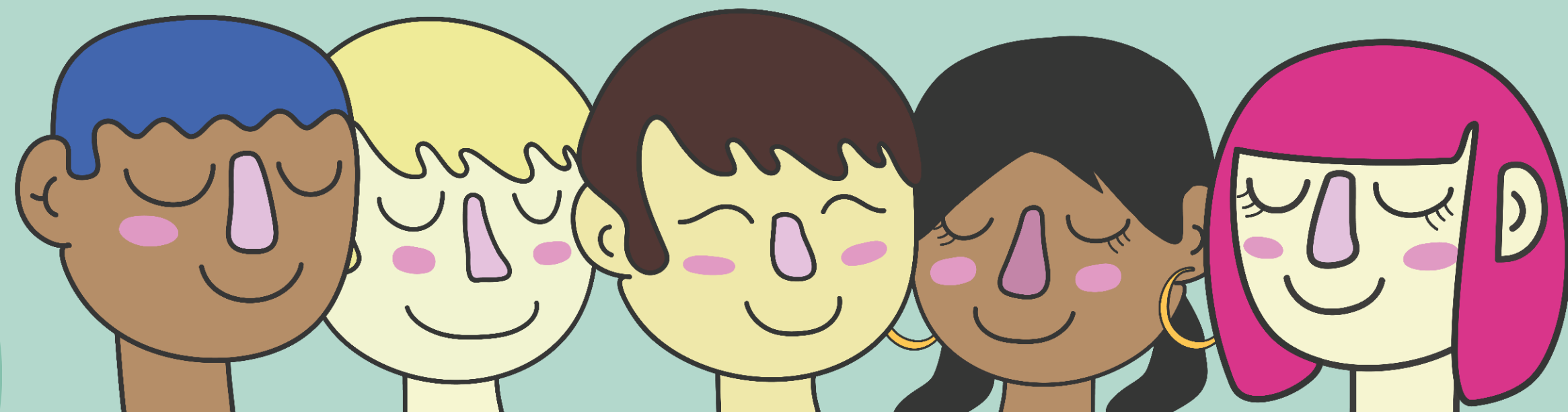
**To Study Abroad in
2024-2025**

Relé Office – School of Design

STUDY

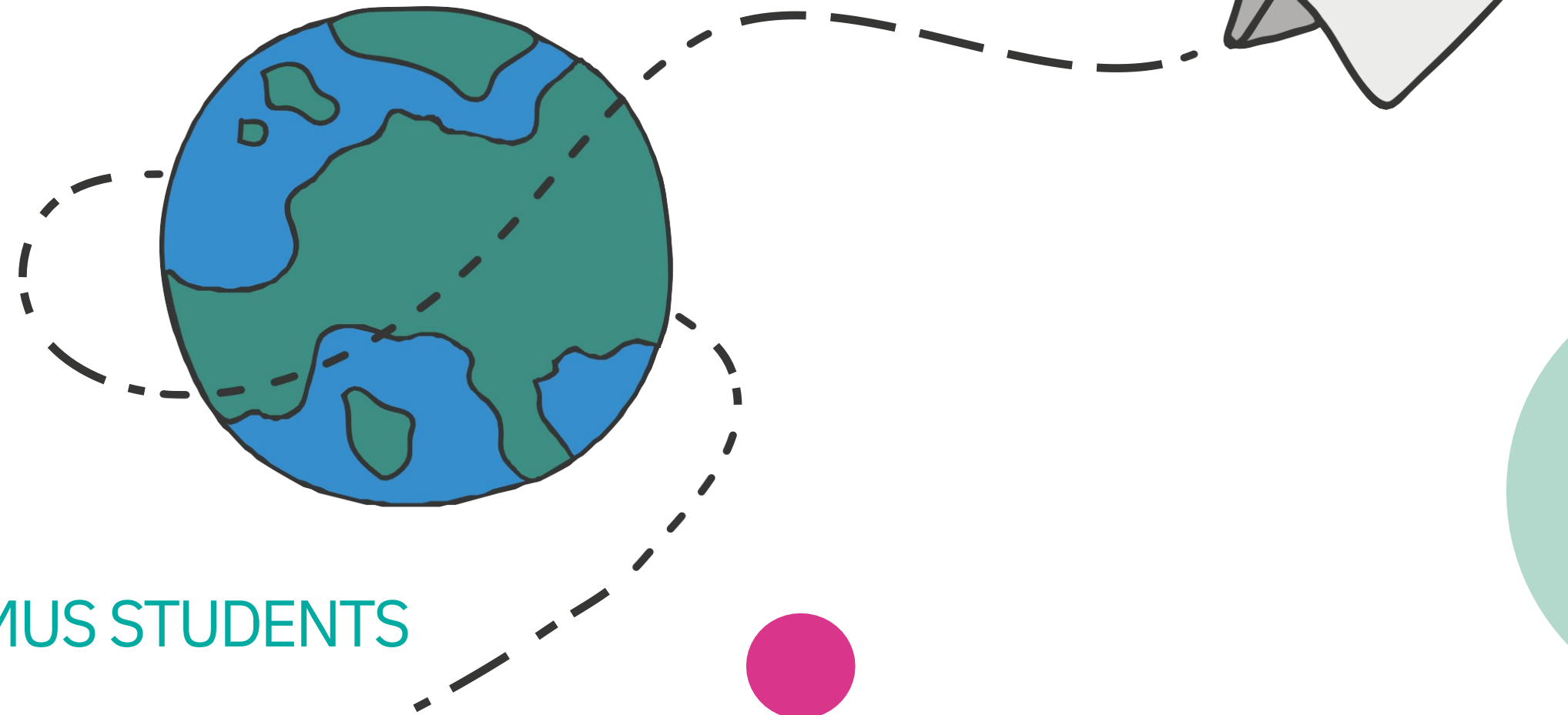
ABROAD

WHY - WHEN - WHAT



WHY

COMPARE YOUR IDEAS WITH
INTERNATIONAL VISIONS
AND APPROACHES

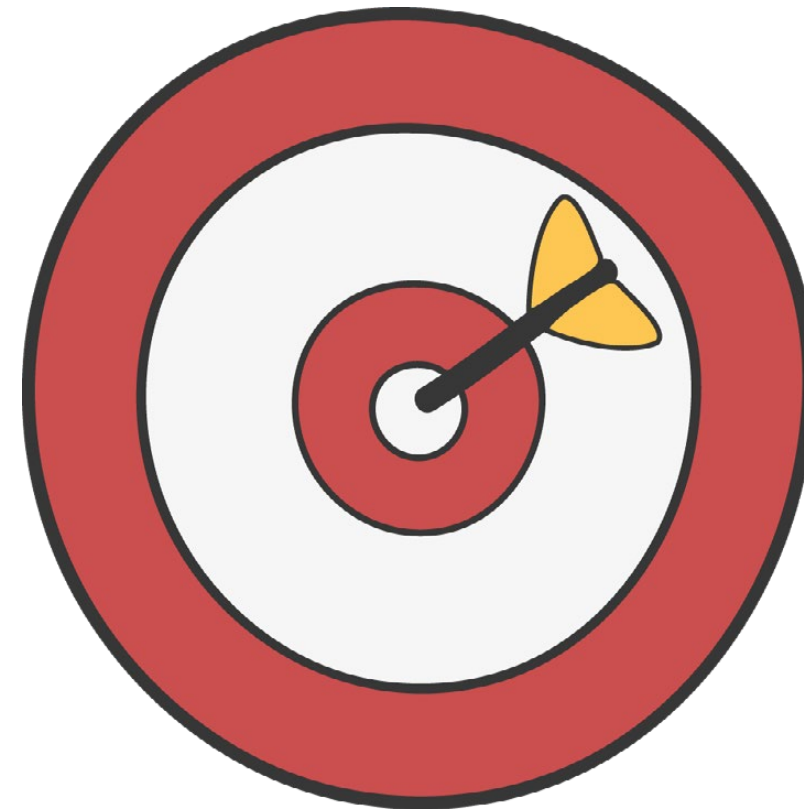


3 OUT OF 4 ERASMUS STUDENTS
SAY THEY HAVE A
BETTER UNDERSTANDING OF
WHAT THEY WANT TO DO IN
THEIR FUTURE CAREERS ONCE
THEY RETURN FROM ABROAD

FONT: [HOME](#) / [ERASMUS+ \(EUROPA.EU\)](#)

WHY

INCREASE YOUR JOB OPPORTUNITIES



STATISTICS SHOW THAT
AFTER GRADUATION,
STUDENTS WITH EXPERIENCE
ABROAD FIND JOBS EARLIER
AND EASIER THAN THEIR
PEERS

FONT: [THE ERASMUS IMPACT STUDY - EUROPEAN COMMISSION](#)

WHAT

208

PARTNER UNIVERSITIES
IN EU & NON EU

2

CALLS PER YEAR
NOVEMBER & APRIL

TO STUDY ABROAD
IN THE ACADEMIC YEAR 2024-2025

FIRST CALL
APPLICATION ONLINE
FROM 16 NOVEMBER TO 10 JANUARY

SCHOLARSHIPS FOR EU AND NON EU
PARTNER UNIVERSITIES

GO FOR IT!

COURSES IN THE PARTNER
UNIVERSITY
WITH CREDITS AND GRADES
RECOGNIZED AT
POLITECNICO



WHEN - STUDENTI DI LAUREA TRIENNALE

CANDIDANDOTI AL	PER COSA	QUANDO PARTIRAI	DOVE
1° Anno Laurea	Scambio per Studio	2° Anno Laurea 1° e/o 2° semestre	In UE o fuori UE
2° Anno Laurea	Scambio per Studio	3° Anno Laurea solo 2° semestre	In UE o fuori UE
	MEDES Program	3° Anno Laurea e 1° Anno Magistrale	In UE in 2 delle sedi partner nel network MEDES
	Doppia Laurea	3° Anno Laurea solo 2° semestre	In AzUAC
3° Anno Laurea	Scambio per Studio	1° Anno Magistrale solo 2° semestre*	In UE o fuori UE

*SOLO PER STUDENTI CHE ANDRANNO IN UN **CORSO DI MAGISTRALE IN CONTINUITÀ DIRETTA** CON IL CORSO DI LAUREA TRIENNALE

WHAT - STUDENTI DI LAUREA TRIENNALE

COURSES

**CREDITS AND GRADES
RECOGNIZED**

THESIS

CAN'T BE VALIDATED

YOU CAN DEVELOP THE THESIS
IN PARALLEL TO THE EXCHANGE
WITH YOUR SUPERVISOR AT
POLITECNICO

WHAT - MASTER LEVEL STUDENTS

APPLYING AT	TO DO WHAT	WHEN WILL YOU GO	WHERE
1st Year Master	Mobility for study	2nd Year Master 1st and/or 2nd semester*	In EU or non EU
	Double Degree	2nd Year Master 2nd semester	
2nd Year Master	Erasmus+ Traineeship Call on April	2nd year Master 2nd semester or after the Degree	In EU

**INTEGRATED PRODUCT
FASHION DESIGN
COMMUNICATION DESIGN
PRODUCT SERVICE SYSTEM
DESIGN & ENGINEERING**

2nd Year Master
2nd semester

INTERIOR AND SPATIAL DESIGN

2nd Year Master
1st and/or 2nd semester

DIGITAL AND INTERACTION

2nd Year Master
1st or 2nd semester

WHAT – MASTER LEVEL STUDENTS

COURSES

&

INTERNSHIP

CREDITS AND GRADES
RECOGNIZED

THE INTERNSHIP CAN BE VALIDATED

WITH PROJECT-BASED COURSES

BUT YOU NEED TO

KEEP AT LEAST ONE CURRICULAR COURSE

TO BE VALIDATED **IN ADDITION** TO THE
INTERNSHIP

WHAT – MASTER LEVEL STUDENTS

THESIS CO-TUTORED

WITH A PROFESSOR FROM POLITENICO AND
FROM THE PARTNER UNIVERSITY

**CREDITS RECOGNIZED OUTSIDE THE EXCHANGE
BY THE THESIS SUPERVISOR FROM
POLITECNICO**

SPECIAL PROGRAMS

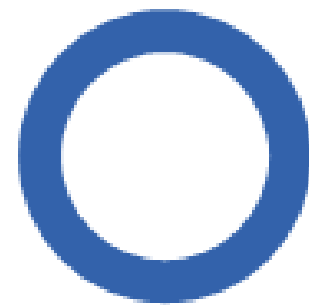


MEDES

Candidatura al 2° anno di
Laurea!

Master of European Design

NETWORK TRA 7 SCUOLE EUROPEE DI DESIGN
PROGRAMMA DI ECCELLENZA



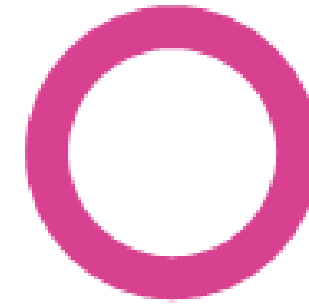
DECA
Aveiro, Portogallo



GSA
Glasgow, Regno Unito



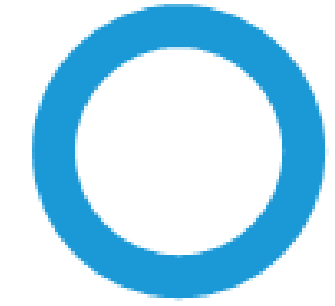
ENSCI
Parigi, Francia



KONSTFACK
Stoccolma, Svezia



KISD
Colonia, Germania



AALTO
Helsinki, Finlandia



POLIMI
Milano, Italia

Candidatura al 2° anno di
Laurea!

Master of European Design

STUDENTI SELEZIONATI PARTECIPERANNO A 2 ANNI DI SCAMBIO

CHI	QUANDO	CANDIDATURA
6 STUDENTI PRODOTTO INTERNI COMUNICAZIONE	3o Anno di Laurea 1o scambio 1o Anno di Magistrale 2o scambio	2o Anno di Laurea

LA SELEZIONE **RICHIÈDE UNA MEDIA DEL 28** E AVRANNO UN COLLOQUIO DI SELEZIONE CON IL DOCENTE PROMOTORE PROF. JAMES POSTELL

MORE INFO:

PRESENTAZIONE PROGRAMMA MEDES 23 e 30 NOVEMBRE ORE 13.15 AULA B2.0.1

<https://masterofeuropandesign.wordpress.com/>

Candidatura al 3° anno di LT
o al 1° anno di LM!

Fashion Institute of Technology – New York

STUDENTI SELEZIONATI PARTECIPERANNO A 1 SEMESTRE DI SCAMBIO

CHI	QUANDO	CANDIDATURA
5 STUDENTI FASHION DESIGN	1o Anno di Magistrale 2o semestre o 2o Anno di Magistrale 2o semester	3o Anno di Laurea o 1o Anno di Magistrale

LA SELEZIONE RICHIEDE UN PORTFOLIO DI OTTIMA QUALITA' E UN COLLOQUIO DI SELEZIONE CON IL DOCENTE PROMOTORE PROF. CHIARA COLOMBI

More Info:

CHIARA.COLOMBI@POLIMI.IT

[FIT in Milan \(fitnyc.edu\)](http://FIT.in.Milan(fitnyc.edu))

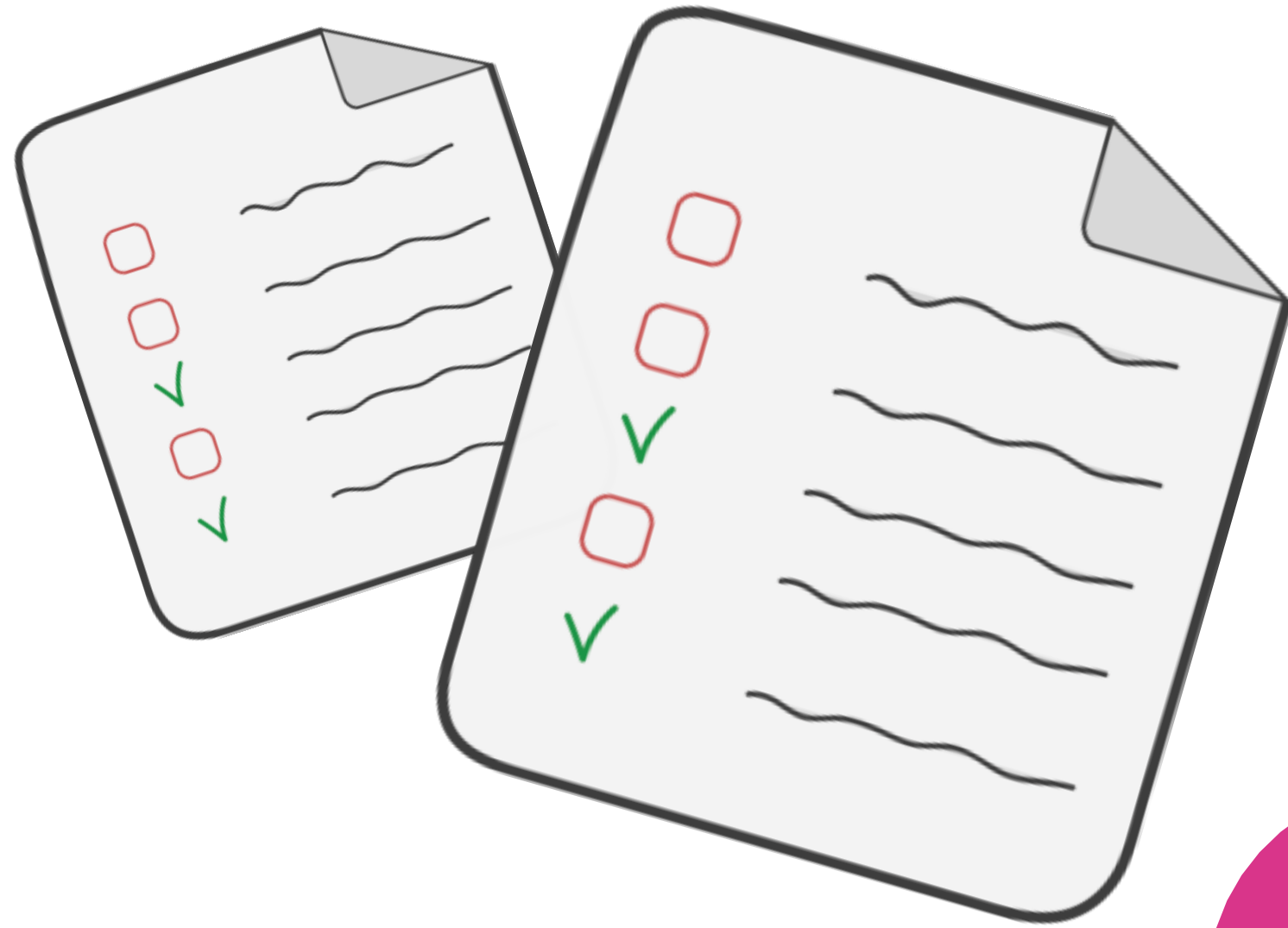
DOUBLE DEGREES



DOUBLE DEGREES

TWO DEGREES

ITALIAN DEGREE & FOREIGN DEGREE
OF THE SAME LEVEL



Doppia Laurea con AzUAC

Candidatura al 2° anno di
Laurea!

Azerbaijan University of Architecture and Construction - Baku

STUDENTI SELEZIONATI PARTECIPERANNO A 1 ANNO DI SCAMBIO

CHI	QUANDO	CANDIDATURA
5 STUDENTI PRODOTTO INTERNI	3o Anno di Laurea 2o semester	2o Anno di Laurea

LA SELEZIONE RICHIEDE UN COLLOQUIO DI SELEZIONE CON IL DOCENTE PROMOTORE PROF. MAURO CECONELLO

MORE INFO:

mauro.ceconello@polimi.it

DOUBLE DEGREES CHINA

Applying at 1st Year Master!

Master level students

SELECTED STUDENTS WILL STAY 2 SEMESTERS ABROAD

UNIVERSITY	MSc PROGRAM	Prof. Promoter	PLACES	SCHEME
Tongji University	Interior Product Service System Communication	Prof. Raffaella Trocchianesi	12	3 semesters at Poli + 2 semesters at Partner University
Tsinghua University	Interior Fashion Product Communication	Prof. Luca Guerrini	15	

MORE INFO:

COME TO THE PRESENTATION ON 27th NOVEMBER from 13:00 to 14:00 Room B2.2.13

THE SELECTION REQUIRES AN INTERVIEW WITH THE PROF. PROMOTER

DOUBLE DEGREES SOUTH AMERICA

Applying at 1st Year Master!

Master level students

SELECTED STUDENTS WILL STAY 3 SEMESTERS ABROAD

UNIVERSITY	MSc PROGRAM	PROF. PROMOTER	PLACES	SCHEME
Universidade du Sao Paulo	Product Communication	Prof. Mario Bisson	3	3 semesters at Poli + 3 semesters at partner University
Universidade Unisinos	Fashion Product	Prof. Umberto Tolino	2	
Universidad Catolica de Chile	Fashion Product Communication	Prof. Elena Caratti	2	

MORE INFO:

COME TO THE PRESENTATION ON 29th NOVEMBER from 13:00 to 14:00 Room B2.2.15

THE SELECTION REQUIRES AN INTERVIEW WITH THE PROMOTER

DOUBLE DEGREES FOR D&E STUDENTS

Applying at 1st Year Master!

Master Design & Engineering students

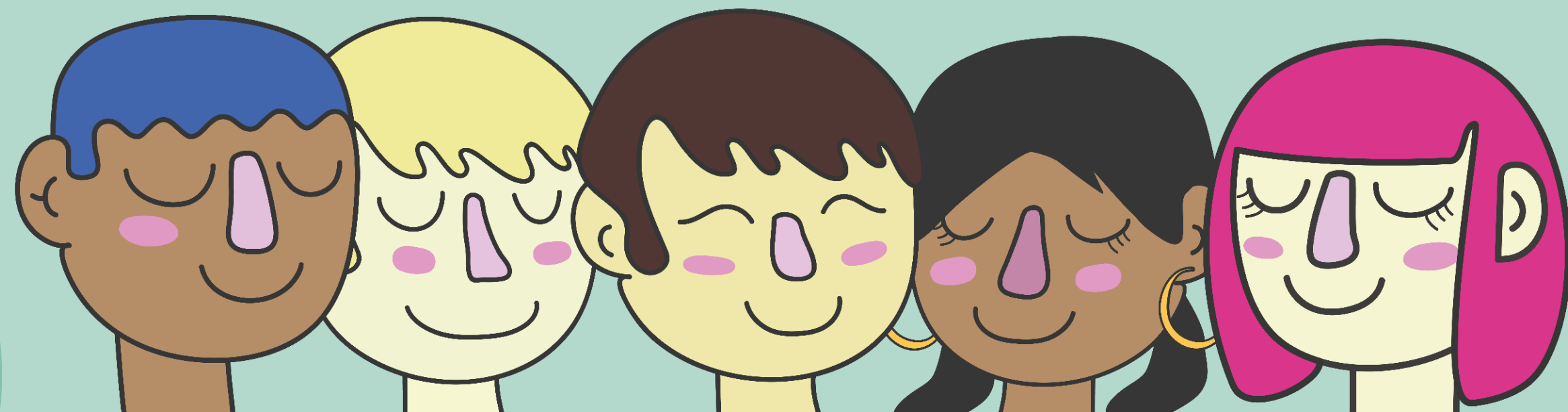
UNIVERSITY	MSc PROGRAM	PROF. PROMOTER	PLACES	SCHEME
Les Ecole Centrale Centrale Supelec Ecole Centrale de Lyon Centrale Nantes	Design & Engineering	Prof. Barbara del Curto	5	3 semesters at Poli + 3 semesters at Partner University
Universidade du Sao Paolo		Prof. Matteo Ingarammo	2	
Xi'an Jiaotong University			3	3 semesters at Poli + 2 semesters at Partner University

MORE INFO:

COME TO THE PRESENTATION ON 30th NOVEMBER from 13:15 to 14:15 Room B2.2.1

THE SELECTION REQUIRES AN INTERVIEW WITH THE PROF. PROMOTER

FINDING YOUR PARTNER UNIVERSITY



STEPS TO DO AN INTERNATIONAL MOBILITY

STUDENTS RESPONSIBILITIES

1 SEARCH
FOR THE
PARTNER
UNIVERSITY

2 APPLY TO THE
CALL

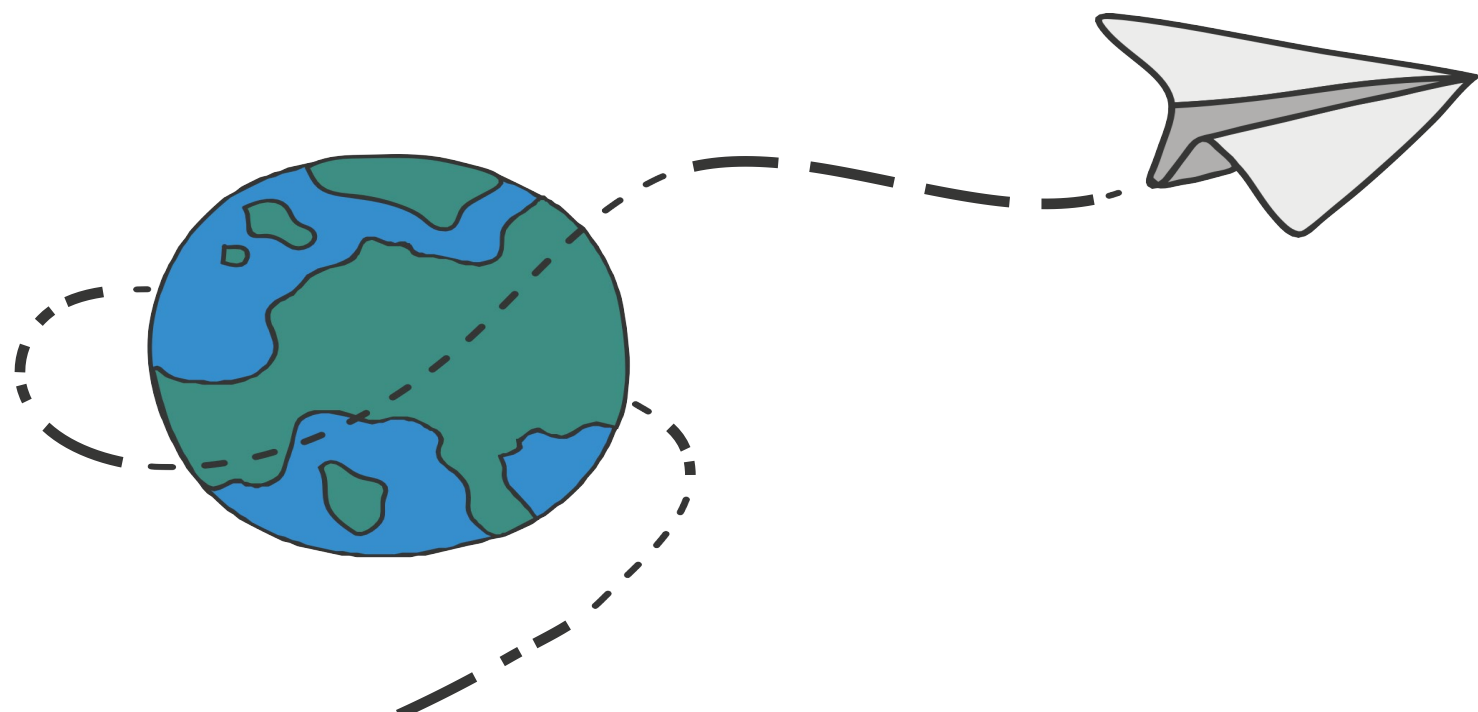
4 ACCEPTANCE
THE EXCHANGE
PLACE

6 APPLICATION
AT THE PARTNER
UNIVERSITY

3 SELECTION
By the Promoters

5 NOMINATION
TO THE PARTNER
UNIVERSITY
*By the International
Mobility Unit (IMU)*

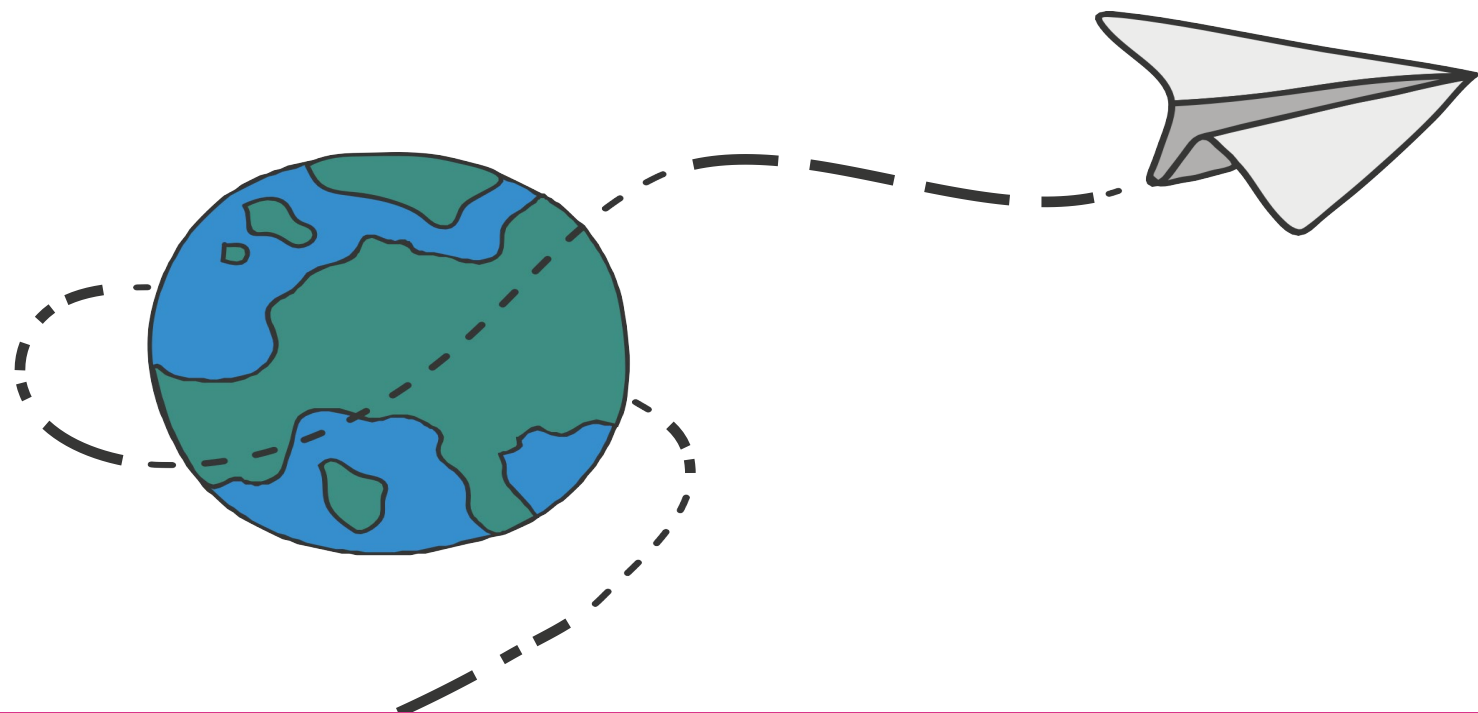
7 ACCEPTANCE
AT THE PARTNER
UNIVERSITY
*By the Partner
University*



! STUDENTS NEED TO ATTEND
THE ACCEPTANCE FROM THE
PARTNER UNIVERSITY

STEPS TO DO AN INTERNATIONAL MOBILITY

**TO BE SELECTED AT
POLITECNICO DOES NOT
MEAN TO BE ACCEPTED BY
THE HOST UNIVERSITY**



WHAT TO CONSIDER

SHORT MOBILITY FOR STUDY

YOU CAN INDICATE UP TO

6

PARTNER UNIVERSITIES
IN A PREFERENCE ORDER

UNIVERSITIES
WITHIN EU AND/OR OUTSIDE EU

DOUBLE DEGREE

YOU CAN INDICATE UP TO

3

PARTNER UNIVERSITIES
IN A PREFERENCE ORDER

UNIVERSITIES
WITHIN EU AND/OR OUTSIDE EU

WHAT TO CONSIDER *AT SELECTING THE PARTNER UNIVERSITIES*

PARTNER UNIVERSITIES

LANGUAGE REQUIREMENTS
TERMS / ACADEMIC CALENDAR
COURSES OFFERS
EXTRA FEES FOR SERVICES

EXCHANGE COUNTRY

TRAVEL COSTS
COST OF LIVING
AVAILABILITY OF ACCOMODATION
CULTURAL ASPECTS
VISA REQUIREMENTS FOR NON EU COUNTRIES

PERSONAL CONSULTING TO SELECT THE PARTNER UNIVERSITIES AT RELE' OFFICE

rele@polimi.it

WHERE YOU CAN FIND INFORMATION

➤ IDENTIFY THE PARTNER UNIVERSITIES FOR YOUR STUDY PROGRAM

Use your degree program for the next academic year as your search primary indicator

_PARTNER UNIVERSITIES MAP: [International mobility: polimi](#)

_PARTNER UNIVERSITIES LIST ON OUR WEBSITE: [Partner Universities 2024*](#)

**This list is only for indicative purposes and not 100% updated, students need to verify the consolidated information about the partner universities directly in the application form.*

➤ GET MORE INFORMATION ABOUT THE PARTNER UNIVERSITIES

_DIGITAL MATERIAL AVAILABLE AND OUTGOING STUDENTS REPORTS: [Discover the partner Universities](#)

_PARTNER UNIVERSITIES WEBSITE - EXCHANGE AREA

➤ GET ADVICE FROM THE PROMOTERS

_ABOUT THE COURSES AVAILABLE AND APPROACH IN THE PARTNER UNIVERSITY



**DESIGN SCHOOL
WEBSITE**

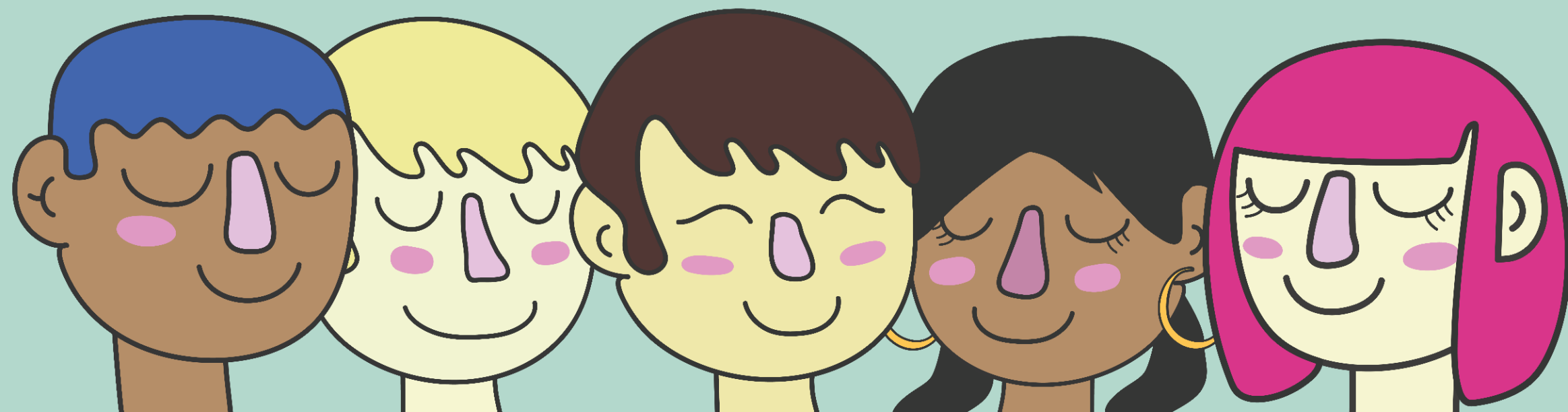
WE ARE HERE TO HELP

RELÉ OFFICE CAN ADVISE YOU ON
CHOOSING A SUITABLE PARTNER UNIVERSITY

CONTACT US AT:
RELE@POLIMI.IT

APPLICATION

WHERE - WHEN - HOW



GET READY TO ANSWER THE CALL

2

CALLS EACH YEAR

1st CALL

FROM 16th NOVEMBER
TO 10th JANUARY

TO STUDY ABROAD

1st and/or 2nd
SEMESTER

2nd CALL*

SCHEDULED ON
APRIL 2024

TO STUDY ABROAD

ONLY IN THE
2nd SEMESTER

**Only those places available that were not awarded in the 1st call and whose nomination deadlines at the partner universities have not yet expired*



APPLICATION
PROCEDURES

GET READY TO ANSWER THE CALL

READ CAREFULLY

THE INTERNATIONAL MOBILITY CALL

IN CASE OF DOUBTS OR QUESTIONS ABOUT THE
APPLICATION PROCESS

CONTACT US AT:

bando-mobilita@polimi.it



APPLICATION
PROCEDURES

GET READY TO ANSWER THE CALL

PORTFOLIO

SHORT
EXHAUSTIVE
INCISIVE

*Remember to specify **the context** in which the projects were implemented*

Max. **10MB**

MOOC to see how to make a portfolio (in italian):

https://www.pok.polimi.it/courses/course-v1:Polimi+PFD101+2021_M3/about

Fin here some TIPS & INPUTS to prepare your portfolio: [20-10 Portfolio.pdf \(polimi.it\)](#)

CURRICULUM VITAE

IN ENGLISH

INCLUDE CURRICULAR AND EXTRACURRICULAR
ACTIVITIES

MAX. **2MB**

MOTIVATIONAL LETTER

BETTER IN ENGLISH

THE MOTIVATIONAL LETTER SHOULD FOCUS ON YOUR
FIRST PREFERENCE

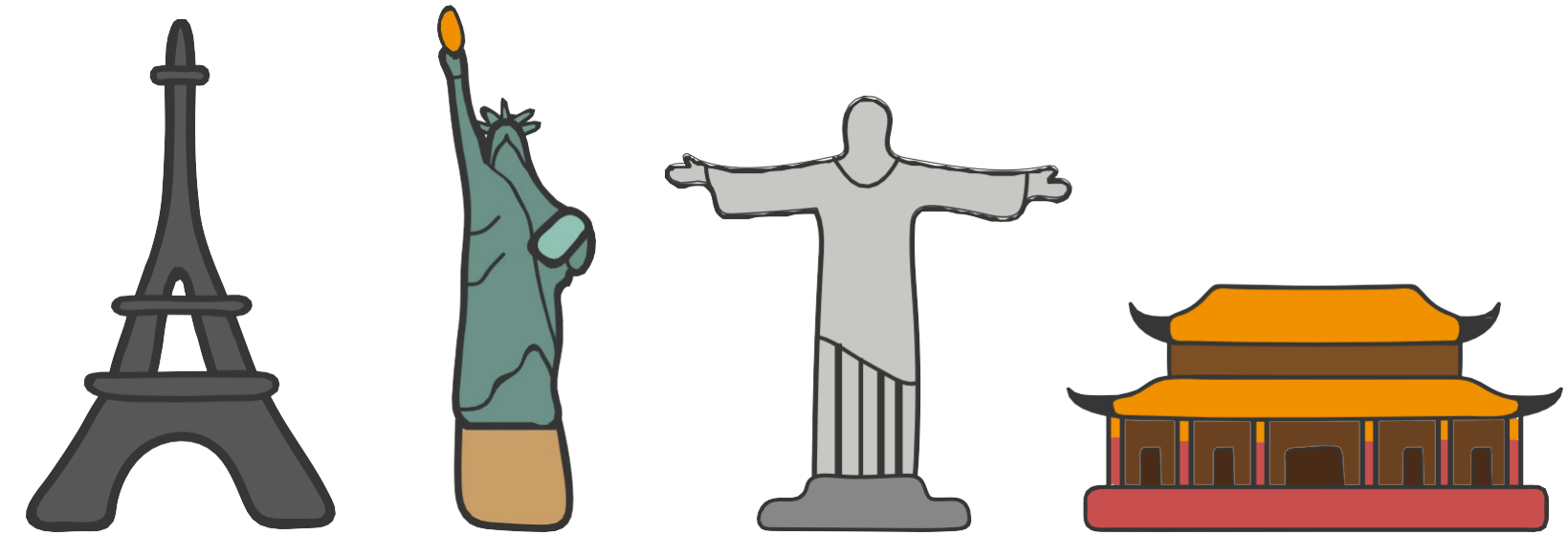


HINTS & TIPS

HINTS & TIPS

DO NOT UNDERESTIMATE LESS KNOWN UNIVERSITIES AND UNCOMMON AREAS THEY OFFER **BETTER SUPPORT AND ADVANCED FACILITIES**

THERE IS LESS POSSIBILITY TO ENTER IN SCHOOLS WITH A HIGH NUMBER OF REQUESTS, YOU SHOULD **CONSIDER YOUR CHOICE ACCORDING TO YOUR ACADEMIC AVERAGE AND PORTFOLIO** OTHERWISE YOU WILL LOSE THE OPPORTUNITY TO HAVE A SEAT.



HINTS & TIPS



COURSES ARE NOT ALWAYS DELIVERED IN ENGLISH CHECK ON THE WEB SITE OF THE PARTNER SCHOOL

WE STRONGLY RECOMMEND **ATTENDING THE LANGUAGE COURSES** OFFERED BY POLITECNICO BEFORE DEPARTURE.

CHOOSE SCHOOLS ASKING FOR LANGUAGE CERTIFICATES IF YOU ALREADY HAVE ONE IN YOUR POCKET.

HINTS & TIPS



LEAVING DOES NOT MEAN LOSING
ONE SEMESTER

**COURSES TAKEN ABROAD ARE
RECOGNIZED AT POLIMI**

YOU NEED TO TAKE THE EXAMS
AND REMEMBER TO KEEP IN
CONTACT WITH THE POLIMI
PROMOTER

HINTS & TIPS



TO KNOW HOW WAS THE EXCHANGE
EXPERIENCE OF YOUR COLLEAGUES
READ THE REPORTS ONLINE

VISIT OUR WEBSITE TO KNOW MORE
ABOUT THE PARTNER UNIVERSITIES:

[Discover the partner Universities](#)

FOR 1ST YEAR MASTER DEGREE STUDENTS

DOUBLE DEGREE PROGRAMS



DD TSINGHUA UNIVERSITY

27TH NOVEMBER 13:00 ROOM B2.2.13

FOR PRODUCT, COMMUNICATION, INTERIOR AND FASHION DESIGN STUDENTS

DD TONGJI UNIVERSITY

27TH NOVEMBER 13:00 ROOM B2.2.13

FOR COMMUNICATION, INTERIOR AND PRODUCT SERVICE SYSTEM DESIGN STUDENTS

DD UNIVERSIDADE DU SAO PAULO

29TH NOVEMBER 13:00 ROOM B2.2.15

FOR COMMUNICATION AND PRODUCT DESIGN STUDENTS

DD UNISINOS

29TH NOVEMBER 13.00 ROOM B2.2.15

FOR FASHION AND PRODUCT DESIGN STUDENTS

DD U. CATOLICA DE CHILE

29TH NOVEMBER 13.00 ROOM B2.2.15

FOR FASHION AND COMMUNICATION DESIGN STUDENTS

REGISTER HERE



MORE INFORMATION:

WWW.DESIGN.POLIMI.IT

FOR 1ST YEAR DESIGN & ENGINEERING STUDENTS

DOUBLE DEGREE PROGRAMS



30TH NOVEMBER 13:15 ROOM B2.2.1

DD LES ECOLE CENTRALE

PROF. DEL CURTO

DD UNIVERSIDADE DU SAO PAULO

PROF. INGARAMMO

DD XI'AN JIAOTONG UNIVERSITY

PROF. INGARAMMO

REGISTER HERE



MORE INFORMATION:

WWW.DESIGN.POLIMI.IT



EXCHANGE YOUR MIND

JOIN A MOBILITY PROGRAM!
APPLY FROM 16TH NOV TO 10TH JAN

MORE INFO AT



www.design.polimi.it

- 22ND NOVEMBER 13.00-14.15, ROOM B8.2.2 — WHEN
- GENERAL INFORMATION: Q&A — WHAT
- BACHELOR DEGREE - IN ITALIAN — WHEN
- AFTER THE EVENT, OUTSIDE ROOM B8.2.2 — WHAT
- #ASKASTUDENT — WHEN
- STUDENTS SHARING THEIR EXPERIENCES — WHAT
- 23RD NOVEMBER 13.00-14.15, ROOM B2.2.13 — WHEN
- GENERAL INFORMATION: Q&A — WHAT
- MASTER DEGREE - IN ENGLISH — WHEN
- AFTER THE EVENT, OUTSIDE ROOM B2.2.13 — WHAT
- #ASKASTUDENT — WHEN
- STUDENTS SHARING THEIR EXPERIENCES — WHAT
- 16TH, 22ND, 23RD, NOVEMBER AND 5TH DECEMBER — WHEN
- 12.00 - 15.00, HALL B2 — WHAT
- STAND EXCHANGE YOUR MIND — WHEN