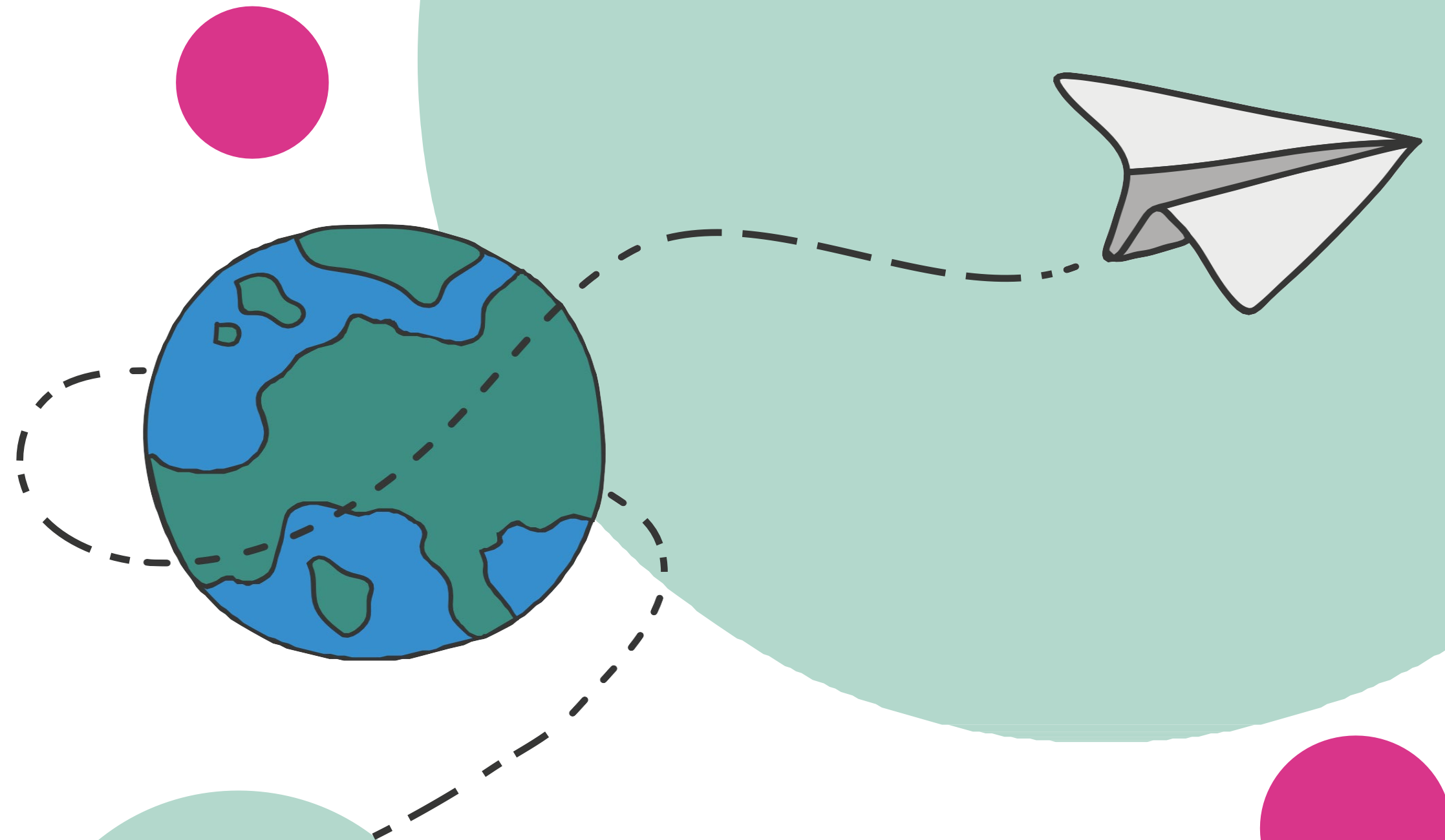


# INTERNATIONAL MOBILITY

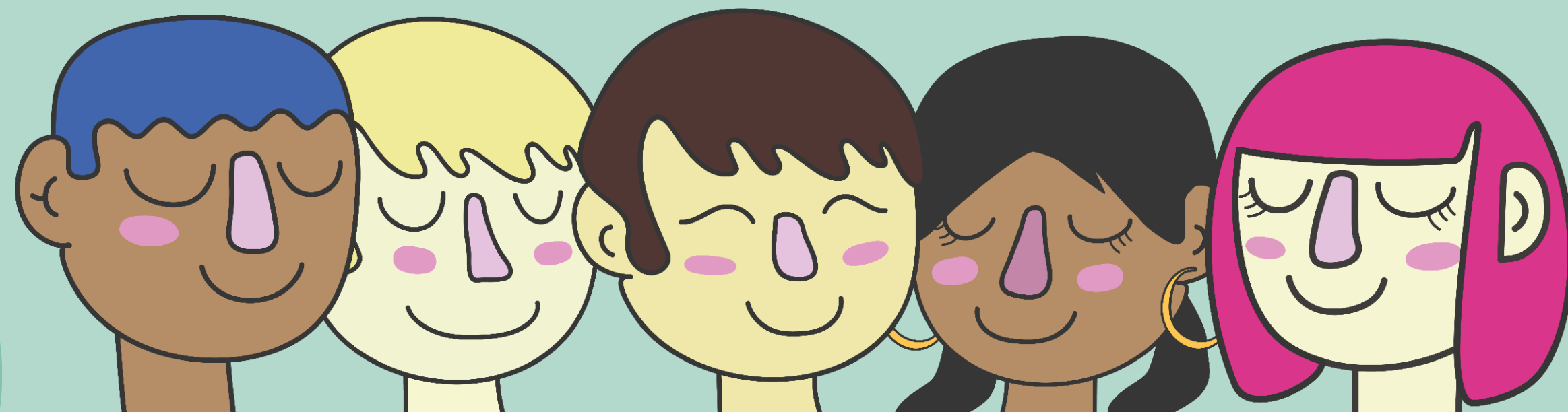


To go in exchange in  
2024-2025

Relé Office – School of Design

# STUDY ABROAD

WHY - WHEN - WHAT



WHY

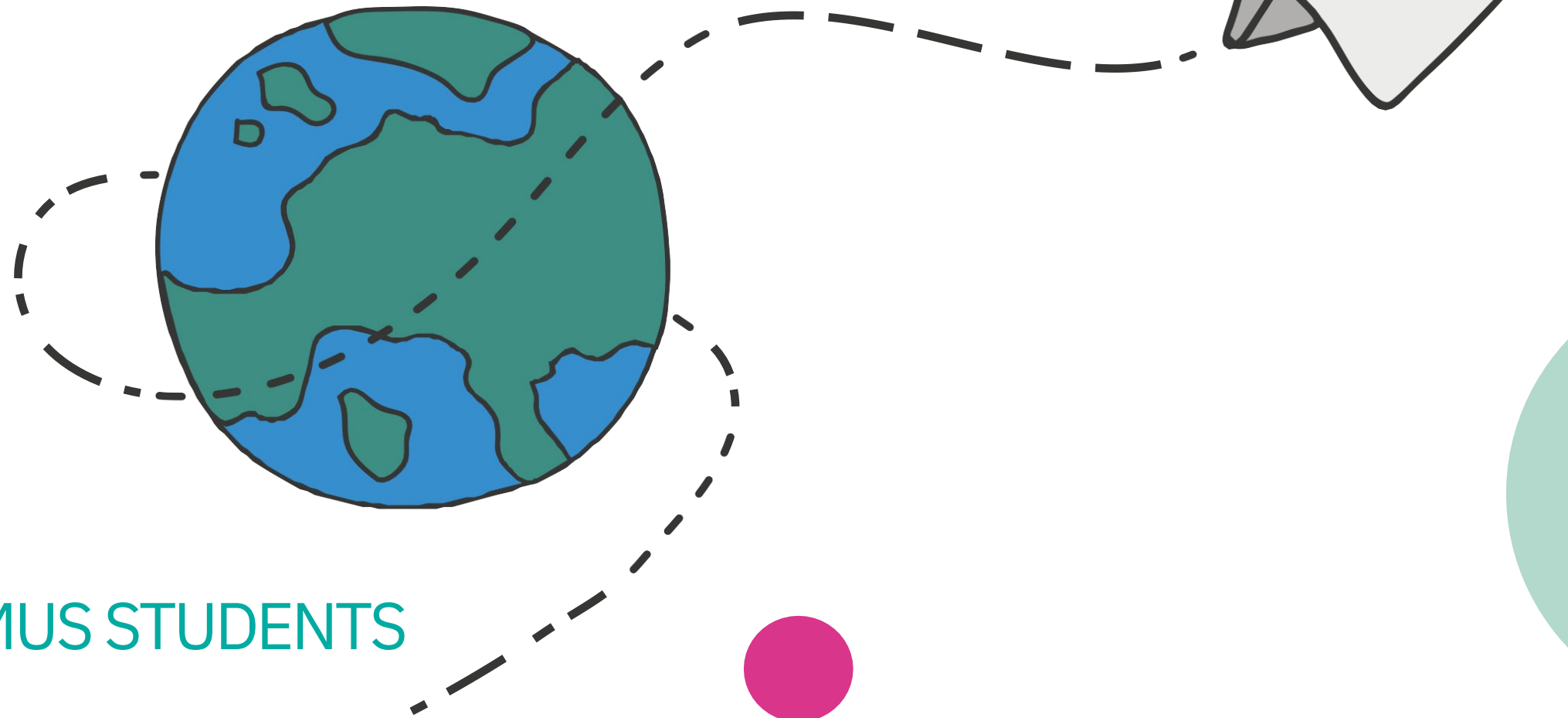
RESOURCEFULNESS  
SELF-MANAGEMENT  
IDEA EXCHANGE  
DECISION-MAKING  
COMMUNICATION  
CRITICAL THINKING  
CONFLICT MANAGEMENT  
CREATIVITY  
TEAMWORK  
TIME MANAGEMENT  
ORGANIZATIONAL ACUTY  
STRESS MANAGEMENT  
PROBLEM-SOLVING  
MEDIATION  
QUESTIONING  
EXPERIMENTATION  
ANALYSIS  
DISCIPLINE  
ADAPTABILITY  
OPENNESS TO CRITICISM  
PERSUASION



# WHY

---

COMPARE YOUR IDEAS WITH  
**INTERNATIONAL VISIONS**  
AND APPROACHES



3 OUT OF 4 ERASMUS STUDENTS  
SAY THEY HAVE A  
**BETTER UNDERSTANDING** OF  
WHAT THEY WANT TO DO IN  
THEIR FUTURE CAREERS ONCE  
THEY RETURN FROM ABROAD

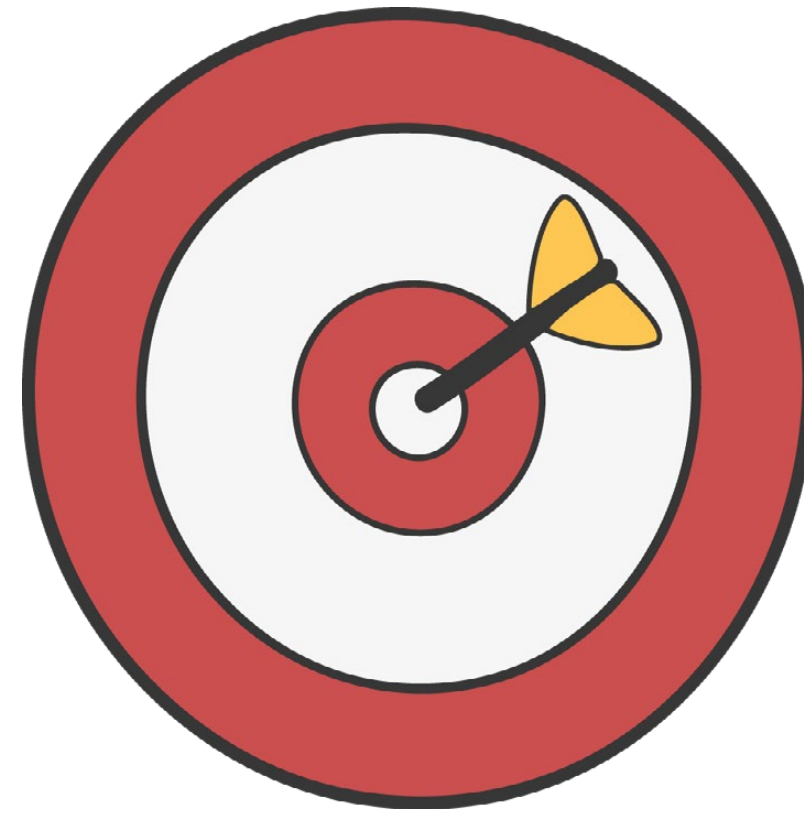
FONT: [HOME / ERASMUS+ \(EUROPA.EU\)](#)

---

# WHY

---

## INCREASE YOUR JOB OPPORTUNITIES



STATISTICS SHOW THAT  
AFTER GRADUATION,  
STUDENTS WITH EXPERIENCE  
ABROAD FIND JOBS EARLIER  
AND EASIER THAN THEIR  
PEERS

FONT: [THE ERASMUS IMPACT STUDY - EUROPEAN COMMISSION](#)

---

# WHAT

---

208

PARTNER UNIVERSITIES  
IN EU & NON EU

2

CALLS PER YEAR  
NOVEMBER & MARCH

TO GO IN EXCHANGE FOR STUDY  
IN THE ACADEMIC YEAR 2024-2025

FIRST CALL  
APPLICATION ONLINE  
FROM 16 NOVEMBER TO 10 JANNUARY

SCHOLARSHIPS FOR EU AND NON EU  
PARTNER UNIVERSITIES

---

# GO FOR IT!

---

COURSES IN THE PARTNER  
UNIVERSITY  
WITH CREDITS AND GRADES  
RECOGNIZED AT  
POLITECNICO



# WHEN - STUDENTI DI LAUREA TRIENNALE

CANDIDANDOTI AL	PER COSA	QUANDO PARTIRAI	DOVE
1° Anno Laurea	Scambio per Studio	2° Anno Laurea 1° e/o 2° semestre	In UE o fuori UE
2° Anno Laurea	Scambio per Studio	3° Anno Laurea solo 2° semestre	In UE o fuori UE
	MEDES Program	3° Anno Laurea e 1° Anno Magistrale	In UE in 2 delle sedi partner nel network MEDes
	Doppia Laurea	3° Anno Laurea solo 2° semestre	In AzUAC
3° Anno Laurea* Scluso per gli studenti di Interni	Scambio per Studio	1° Anno Magistrale solo 2° semestre*	In UE o fuori UE

\*SOLO PER STUDENTI CHE ANDRANNO IN UN **CORSO DI MAGISTRALE IN CONTINUITÀ DIRETTA** CON IL CORSO DI LAUREA TRIENNALE



# WHAT - STUDENTI DI LAUREA TRIENNALE

---

## COURSES

CREDITS AND GRADES  
RECOGNIZED

## THESIS

CAN'T BE VALIDATED

YOU CAN DEVELOP THE THESIS  
IN PARALLEL TO THE EXCHANGE  
WITH YOUR SUPERVISOR AT  
POLITECNICO

---

# WHAT - MASTER LEVEL STUDENTS

APPLYING AT	TO DO WHAT	WHEN WILL YOU GO	WHERE
1st Year Master	Mobility for study	2nd Year Master 1st and/or 2nd semester*	In EU or non EU
	Double Degree	2nd Year Master 2nd semester	

INTEGRATED PRODUCT FASHION DESIGN COMMUNICATION DESIGN PRODUCT SERVICE SYSTEM DESIGN & ENGINEERING	INTERIOR AND SPATIAL DESIGN	DIGITAL AND INTERACTION
2nd Year Master 2nd semester	2nd Year Master 1st and/or 2nd semester	2nd Year Master 1st or 2nd semester

# WHAT – MASTER LEVEL STUDENTS

---

**COURSES**

**&**

**INTERNSHIP**

CREDITS AND GRADES  
RECOGNIZED

**THE INTERNSHIP CAN BE VALIDATED**

WITH PROJECT-BASED COURSES

BUT

YOU NEED TO

**KEEP AT LEAST ONE CURRICULAR COURSE**

TO VALIDATE WITH THE INTERNSHIP

---

# WHAT

---

## **THESIS CO-TUTORED**

WITH A PROFESSORS FROM POLITENICO AND  
FROM THE PARTNER UNIVERSITY

**CREDITS RECOGNIZED OUTSIDE THE EXCHANGE  
BY THE THESIS SUPERVISOR FROM  
POLITECNICO**

---

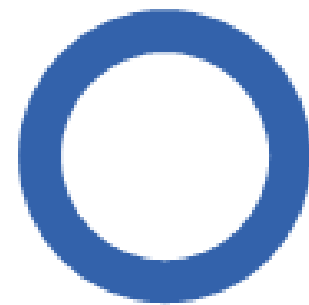


# SPECIAL PROGRAMS

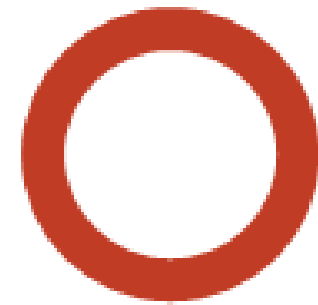


## Master of European Design

NETWORK TRA 7 SCUOLE EUROPEE DI DESIGN  
PROGRAMMA DI ECCELLENZA



**DECA**  
Aveiro, Portogallo



**GSA**  
Glasgow, Regno Unito



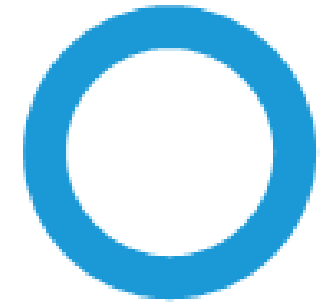
**ENSCI**  
Parigi, Francia



**KONSTFACK**  
Stoccolma, Svezia



**KISD**  
Colonia, Germania



**AALTO**  
Helsinki, Finlandia



**POLIMI**  
Milano, Italia

## Master of European Design

STUDENTI SELEZIONATI PARTECIPERANNO A 2 ANNI DI SCAMBIO

CHI	QUANDO	CANDIDATURA
<b>6</b> <b>STUDENTI</b> PRODOTTO INTERNI COMUNICAZIONE	<b>3o Anno di Laurea</b> 1o scambio  <b>1o Anno di Magistrale</b> 2o scambio	<b>2o Anno di Laurea</b>

LA SELEZIONE **RICHIESTE UNA MEDIA DEL 28** E AVRANNO UN COLLOQUIO DI SELEZIONE CON IL DOCENTE PROMOTORE PROF. JAMES POSTELL

### MORE INFO:

**PRESENTAZIONE PROGRAMMA MEDES 23 e 30 NOVEMBRE ORE 13.00 AULA B2.0.1**

<https://masterofeuropeandesign.wordpress.com/>

# Fashion Institute of Technology – New York

STUDENTI SELEZIONATI PARTECIPERANNO A 1 SEMESTRE DI SCAMBIO

CHI	QUANDO	CANDIDATURA
<p><b>5</b></p> <p><b>STUDENTI</b></p> <p>FASHION DESIGN</p>	<p><b>1o Anno di Magistrale</b> 2o semestre</p> <p>o</p> <p><b>2o Anno di Magistrale</b> 2o semester</p>	<p><b>3o Anno di Laurea</b> o <b>1o Anno di Magistrale</b></p>

LA SELEZIONE RICHIEDE UN PORTFOLIO DI OTTIMA QUALITA’ E UN COLLOQUIO DI SELEZIONE CON IL DOCENTE PROMOTORE PROF. CHIARA COLOMBI

**More Info:**  
 CHIARA.COLOMBI@POLIMI.IT  
[FIT in Milan \(fitnyc.edu\)](http://FIT in Milan (fitnyc.edu))





# DOUBLE DEGREES

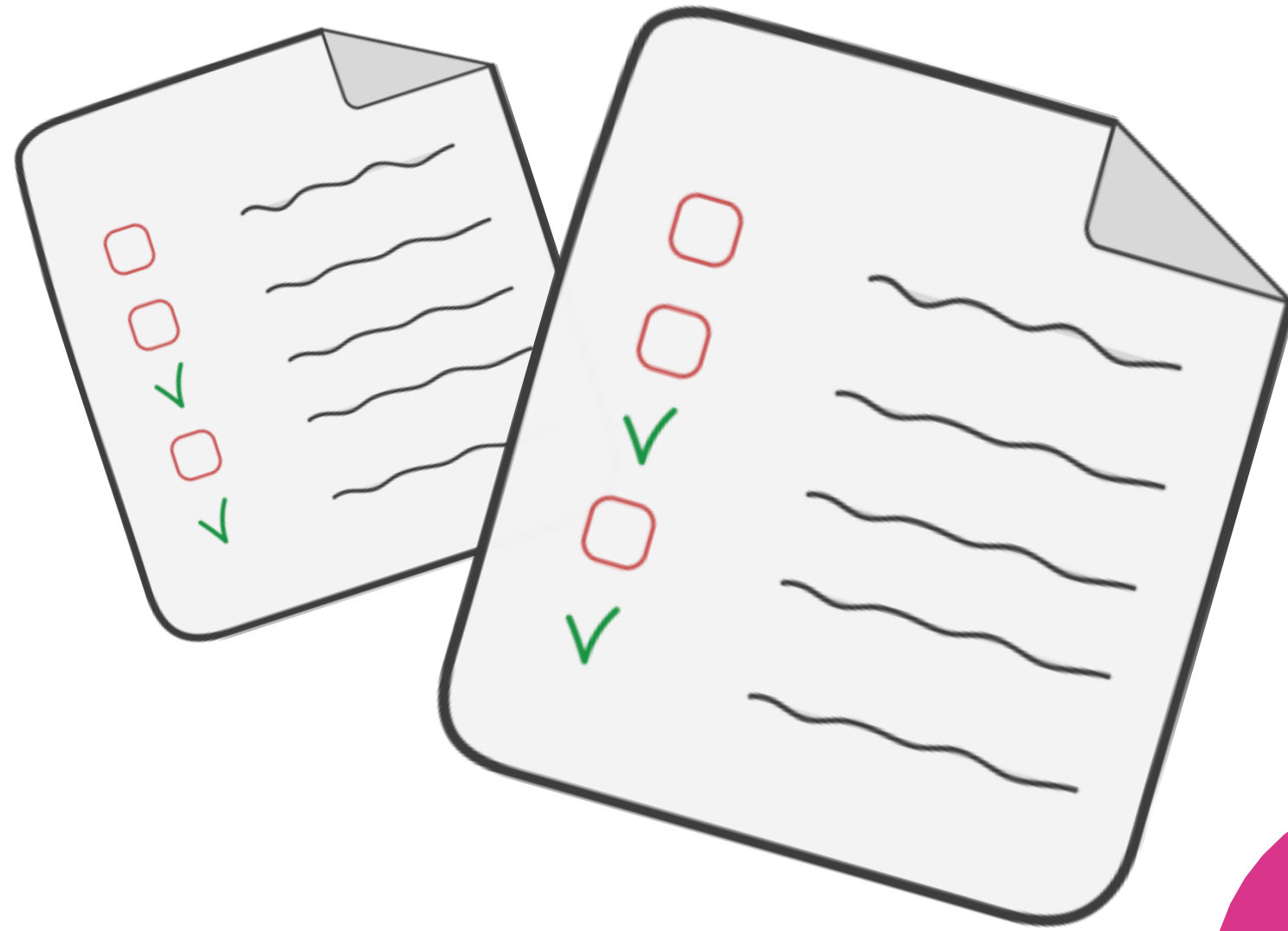


# DOUBLE DEGREES

---

## TWO DEGREES

ITALIAN DEGREE & FOREIGN DEGREE  
OF THE SAME LEVEL



# Doppia Laurea con AzUAC

Candidatura al 2° anno di  
Laurea!

## Azerbaijan University of Architecture and Construction - Baku

STUDENTI SELEZIONATI PARTECIPERANNO A 1 ANNO DI SCAMBIO

CHI	QUANDO	CANDIDATURA
5 STUDENTI PRODOTTO INTERNI	3o Anno di Laurea 2o semester	2o Anno di Laurea

LA SELEZIONE RICHIEDE UN COLLOQUIO DI SELEZIONE CON IL DOCENTE PROMOTORE PROF. MAURO CECONELLO

MORE INFO:  
[mauro.ceconello@polimi.it](mailto:mauro.ceconello@polimi.it)

# DOUBLE DEGREES CHINA

Applying at 1st Year Master!

## Master level students

SELECTED STUDENTS WILL STAY 2 SEMESTERS ABROAD

UNIVERSITY	MSc PROGRAM	Prof. Promoter	PLACES	SCHEME
Tongji University	Interior Product Service System Communication	Prof. Raffaella Trocchianesi	12	3 semesters at Poli + 2 semesters at Partner University
Tsinghua University	Interior Fashion Product Communication	Prof. Luca Guerrini	15	

### MORE INFO:

COME TO THE PRESENTATION ON 27th NOVEMBER from 13:00 to 14:00 Room B2.2.13

THE SELECTION REQUIRES AN INTERVIEW WITH THE PROF. PROMOTER

# DOUBLE DEGREES SOUTH AMERICA

Applying at 1st Year Master!

## Master level students

SELECTED STUDENTS WILL STAY 3 SEMESTERS ABROAD

UNIVERSITY	MSc PROGRAM	PROF. PROMOTER	PLACES	SCHEME
Universidade du Sao Paulo	Product Communication	Prof. Mario Bisson	3	3 semesters at Poli + 3 semesters at partner University
Universidade Unisinos	Fashion Product	Prof. Umberto Tolino	2	
Universidad Catolica de Chile	Fashion Product Communication	Prof. Elena Caratti	2	

### MORE INFO:

COME TO THE PRESENTATION ON 29th NOVEMBER from 13:00 to 14:00 Room B2.2.15

THE SELECTION REQUIRES AN INTERVIEW WITH THE PROMOTER

# DOUBLE DEGREES FOR D&E STUDENTS

Applying at 1st Year Master!

## Master Design & Engineering students

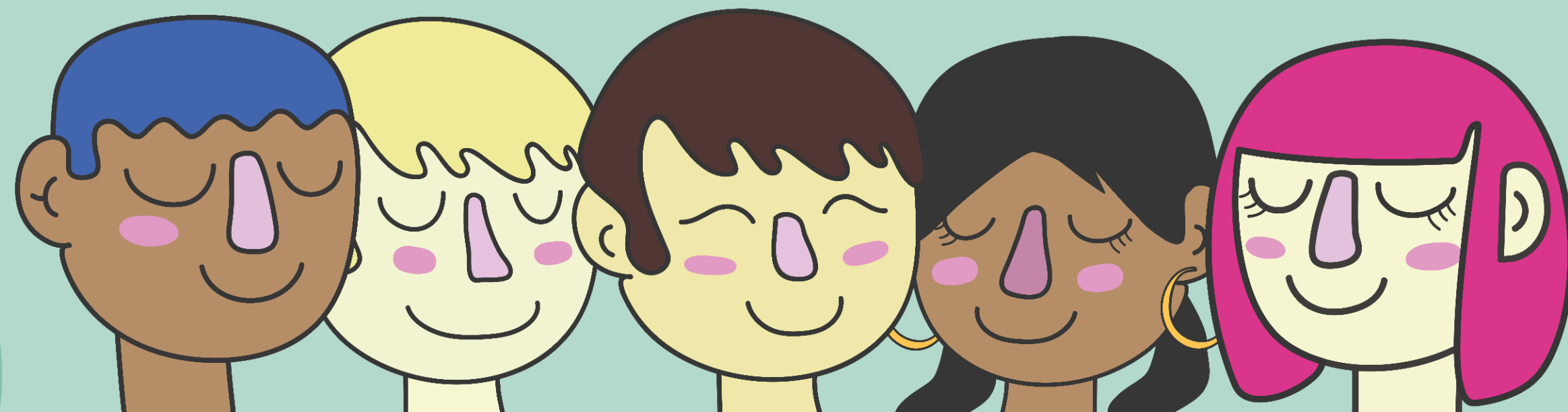
UNIVERSITY	MSc PROGRAM	PROF. PROMOTER	PLACES	SCHEME
Les Ecole Centrale Centrale Supelec Ecole Centrale de Lyon Centrale Nantes	Design & Engineering	Prof. Barbara del Curto	5	3 semesters at Poli + 3 semesters at Partner University
Universidade du Sao Paolo		Prof. Matteo Ingarammo	2	
Xi'an Jiaotong University			3	3 semesters at Poli + 2 semesters at Partner University

### MORE INFO:

**COME TO THE PRESENTATION ON 30th NOVEMBER from 13:15 to 14:15 Room B2.2.1**

THE SELECTION REQUIRES AN INTERVIEW WITH THE PROF. PROMOTER

# FINDING YOUR PARTNER UNIVERSITY



# STEPS TO DO AN INTERNATIONAL MOBILITY

## YOUR RESPONSABILITIES

**SEARCH** FOR  
THE PARTNER  
UNIVERSITY

APPLY TO THE  
**CALL**

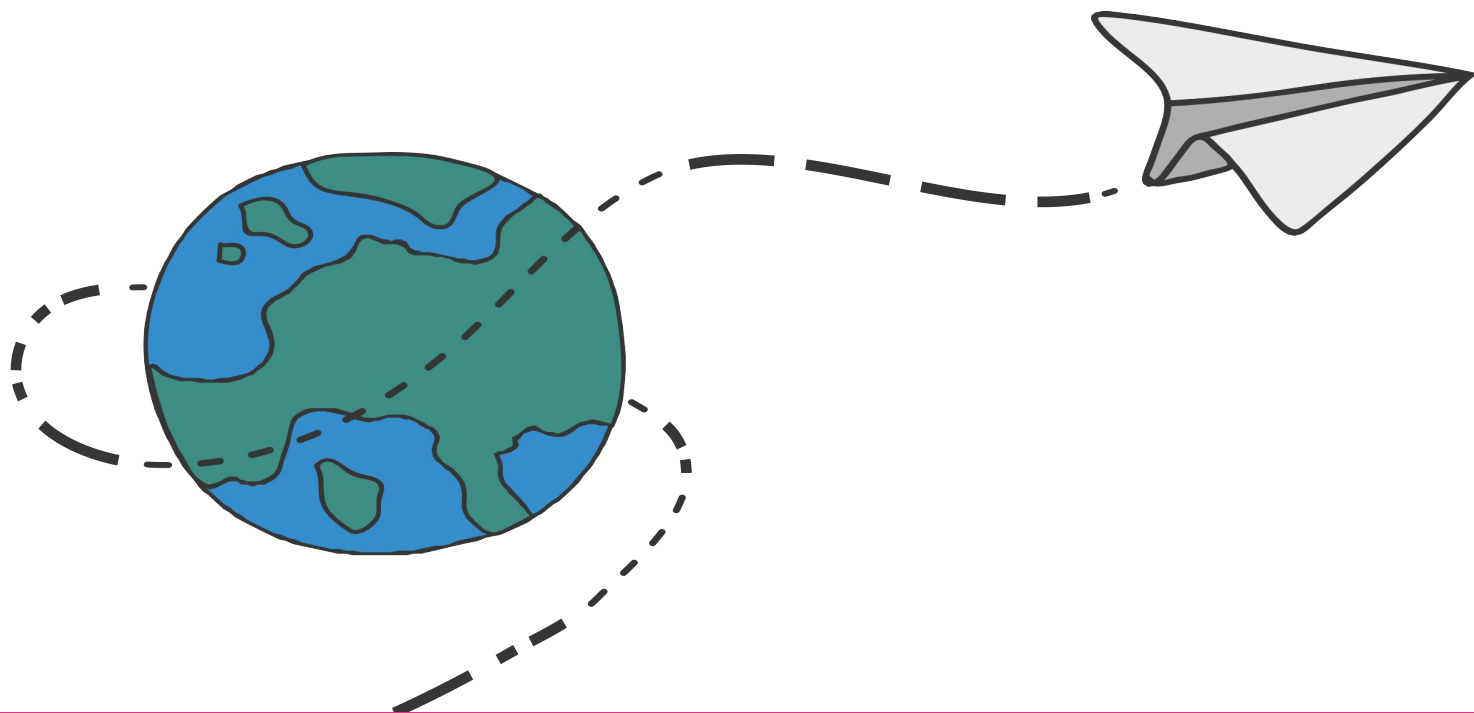
**ACCEPTANCE**  
THE EXCHANGE  
PLACE

**APPLICATION**  
AT THE PARNET  
UNIVERSITY

**SELECTION**  
*By the Promoters*

**NOMINATION**  
TO THE PARTNER  
UNIVERSITY  
*By the International  
Mobility Unit (IMU)*

**ACCEPTANCE**  
AT THE PARNET  
UNIVERSITY  
*By the Partner  
University*





# WHAT TO CONSIDER

---

## SHORT MOBILITY FOR STUDY

YOU CAN INDICATE UP TO

6

PARTNER UNIVERSITIES  
IN A PREFERENCE ORDER

**UNIVERSITIES**  
WITHIN EU AND/OR OUTSIDE EU

## DOUBLE DEGREE

YOU CAN INDICATE UP TO

3

PARTNER UNIVERSITIES  
IN A PREFERENCE ORDER

**UNIVERSITIES**  
WITHIN EU AND/OR OUTSIDE EU

---

# WHAT TO CONSIDER *AT SELECTING THE PARTNER UNIVERSITIES*

---

## PARTNER UNIVERSITIES

LANGUAGE REQUIREMENTS  
TERMS  
COURSES OFFERS  
EXTRA FEES FOR SERVICES

## EXCHANGE COUNTRY

TRAVEL COSTS  
COST OF LIVING  
AVAILABILITY OF ACCOMODATION  
CULTURAL ASPECTS  
VISA REQUIREMENTS FOR NON EU COUNTRIES

PERSONAL CONSULTING TO SELECT THE PARTNER UNIVERSITIES AT RELE' OFFICE

[rele@polimi.it](mailto:rele@polimi.it)

---

# WHERE YOU CAN FIND INFORMATION

---

## IDENTIFY THE PARTNER UNIVERSITIES FOR YOUR STUDY PROGRAM

Use your degree program for the next academic year as your search primary indicator

\_PARTNER UNIVERSITIES MAP: [International mobility: polimi](#)

\_PARTNER UNIVERSITIES LIST IN OUR WEBSTIE: [Partner Universities 2024](#)

## GET MORE INFORMATION ABOUT THE PARTNER UNIVERSITIES

\_DIGITAL MATERIAL AVAILABLE AND OUTGOING STUDENTS REPORTS: [Discover the partner Universities](#)

\_PARTNER UNIVERSITIES WEBSITE - *EXCHANGE AREA*

## GET ADVICE FROM THE PROMOTERS

\_ABOUT THE COURSES AVAILALBE AND APPROACH IN THE PARTNER UNIVERSITY



DESIGN SCHOOL  
WEBSITE

---

# WE ARE HERE TO HELP

---

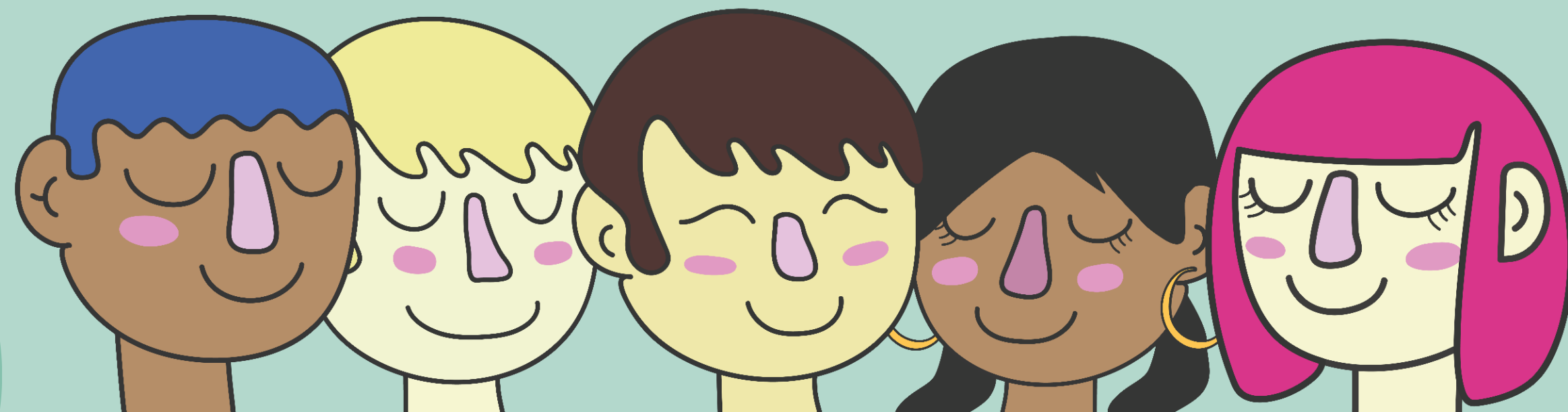
RELÉ OFFICE CAN ADVISE YOU ON  
**CHOOSING A SUITABLE PARTNER UNIVERSITY**

CONTACT US AT:  
[RELE@POLIMI.IT](mailto:RELE@POLIMI.IT)

---

# APPLICATION

*WHERE – WHEN – HOW*



# GET READY TO ANSWER THE CALL

---

2

CALLS EACH YEAR

## 1st CALL

FROM 16th NOVEMBER  
TO 10th JANUARY

## TO GO IN EXCHANGE

1st and/or 2nd  
SEMESTER

## 2nd CALL\*

SCHEDULED ON  
MARCH 2024

## TO GO IN EXCHANGE

ONLY IN THE  
2nd SEMESTER

*\*Only those places available that  
were not awarded in the 1st call and  
whose nomination deadlines at the  
partner universities have not yet  
expired*



APPLICATION  
PROCEDURES

---

# GET READY TO ANSWER THE CALL

---

## PORTFOLIO

SHORT  
EXHAUSTIVE  
INCISIVE

*Remember to specify **the context** in which the projects were implemented*

Max. **10MB**

MOOC to see how to make a portfolio (in italian):

[https://www.pok.polimi.it/courses/course-v1:Polimi+PFD101+2021\\_M3/about](https://www.pok.polimi.it/courses/course-v1:Polimi+PFD101+2021_M3/about)

Fin here some TIPS & INPUTS to prepare your portfolio: [20-10 Portfolio.pdf \(polimi.it\)](#)

## CURRICULUM VITAE

**IN ENGLISH**

INCLUDE CURRICULAR AND EXTRACURRICULAR  
ACTIVITIES

MAX. **2MB**

## MOTIVATIONAL LETTER

BETTER IN ENGLISH

THE MOTIVATIONAL LETTER SHOULD FOCUS ON YOUR  
FIRST PREFERENCE

# GET READY TO ANSWER THE CALL

---

READ CAREFULLY

**THE INTERNATIONAL MOBILITY CALL**

IN CASE OF DOUBTS OR QUESTIONS ABOUT THE  
APPLICATION PROCESS

CONTACT US AT:

**[bando-mobilita@polimi.it](mailto:bando-mobilita@polimi.it)**

---





# HINTS & TIPS

# HINTS & TIPS

---

**DO NOT UNDERESTIMATE LESS KNOWN UNIVERSITIES** AND UNCOMMON AREAS THEY OFFER **BETTER SUPPORT AND ADVANCED FACILITIES**

THERE IS LESS POSSIBILITY TO ENTER IN SCHOOLS WITH A HIGH NUMBER OF REQUESTS, YOU SHOULD **CONSIDER YOUR CHOICE ACCORDING TO YOUR ACADEMIC AVERAGE AND PORTFOLIO** OTHERWISE YOU WILL LOSE THE OPPORTUNITY TO HAVE A SEAT.



# HINTS & TIPS

---



COURSES ARE NOT ALWAYS  
DELIVERED IN ENGLISH CHECK ON  
THE WEB SITE OF THE PARTNER  
SCHOOL

WE STRONGLY RECOMMEND  
**ATTENDING THE LANGUAGE  
COURSES** OFFERED BY POLITECNICO  
BEFORE DEPARTURE.

CHOOSE SCHOOLS ASKING FOR  
LANGUAGE CERTIFICATES  
IF YOU ALREADY HAVE ONE IN YOUR  
POCKET.

---

# HINTS & TIPS

---



LEAVING DOES NOT MEAN LOSING  
ONE SEMESTER

**COURSES TAKEN ABROAD ARE  
RECOGNIZED AT POLIMI**

YOU NEED TO TAKE THE EXAMS  
AND REMEMBER TO KEEP IN  
CONTACT WITH THE POLIMI  
PROMOTER

---

# HINTS & TIPS

---



TO KNOW HOW WAS THE EXCHANGE  
EXPERIENCE OF YOUR COLLEAGUES  
**READ THE REPORTS ONLINE**

**VISIT OUR WEBSITE** TO KNOW MORE  
ABOUT THE PARTNER UNIVERSITIES:

[Discover the partner Universities](#)

---





POLITECNICO  
MILANO 1863  
SCUOLA DEL DESIGN

# EXCHANGE YOUR MIND

JOIN A MOBILITY PROGRAM!  
APPLY FROM 16<sup>TH</sup> NOV TO 10<sup>TH</sup> JAN

MORE INFO AT



[www.design.polimi.it](http://www.design.polimi.it)

22 <sup>ND</sup> NOVEMBER 13.00-14.15, ROOM B8.2.2	WHEN
GENERAL INFORMATION: Q&A BACHELOR DEGREE - IN ITALIAN	WHAT
AFTER THE EVENT, OUTSIDE ROOM B8.2.2	WHEN
#ASKASTUDENT STUDENTS SHARING THEIR EXPERIENCES	WHAT
23 <sup>RD</sup> NOVEMBER 13.00-14.15, ROOM B2.2.13	WHEN
GENERAL INFORMATION: Q&A MASTER DEGREE - IN ENGLISH	WHAT
AFTER THE EVENT, OUTSIDE ROOM B2.2.13	WHEN
#ASKASTUDENT STUDENTS SHARING THEIR EXPERIENCES	WHAT
16 <sup>TH</sup> , 22 <sup>ND</sup> , 23 <sup>RD</sup> , NOVEMBER AND 5 <sup>TH</sup> DECEMBER 12.00 - 15.00, HALL B2	WHEN
STAND EXCHANGE YOUR MIND	WHAT